



## **State Road (SR) 716/Southeast Port St. Lucie Boulevard Bridge Rehabilitation Project**

From west of the Long Creek River to east of the North Fork Bridge  
over the St. Lucie River  
In the City of Port St. Lucie, St. Lucie County

Financial Project ID: 443595-2-52-01

Virtual Public Meeting  
Wednesday, January 8, 2025

# Virtual Public Meeting Orientation

## Moderator & Presenter



**Samantha Kayser**  
Community Outreach Specialist  
The Corradino Group

## Meeting Format

### Presentation, Q&A Session

- 5 p.m. to 5:30 p.m.
- 5:30 p.m. to 6 p.m.

The Florida Department of Transportation is required to comply with various non-discrimination laws and regulations, including **Title VI of the Civil Rights Act of 1964.**

*Public participation is solicited without regard to race, color, national origin, age, sex, religion, disability, or family status.*

**Persons wishing to express concerns about Title VI may do so by contacting either:**

**District Four**

Florida Department of Transportation  
*District Four Title VI Coordinator*

**Sharon Singh Hagyan**

(954) 777-4190,

[Sharon.SinghHagyan@dot.state.fl.us](mailto:Sharon.SinghHagyan@dot.state.fl.us)



**Tallahassee Office**

Florida Department of Transportation  
*Statewide Title VI Coordinator*

**Stefan Kulakowski**

(850) 414-4742,

[Stefan.Kulakowski@dot.state.fl.us](mailto:Stefan.Kulakowski@dot.state.fl.us)



*All inquiries or concerns will be handled according to FDOT procedure and in a prompt and courteous manner.*

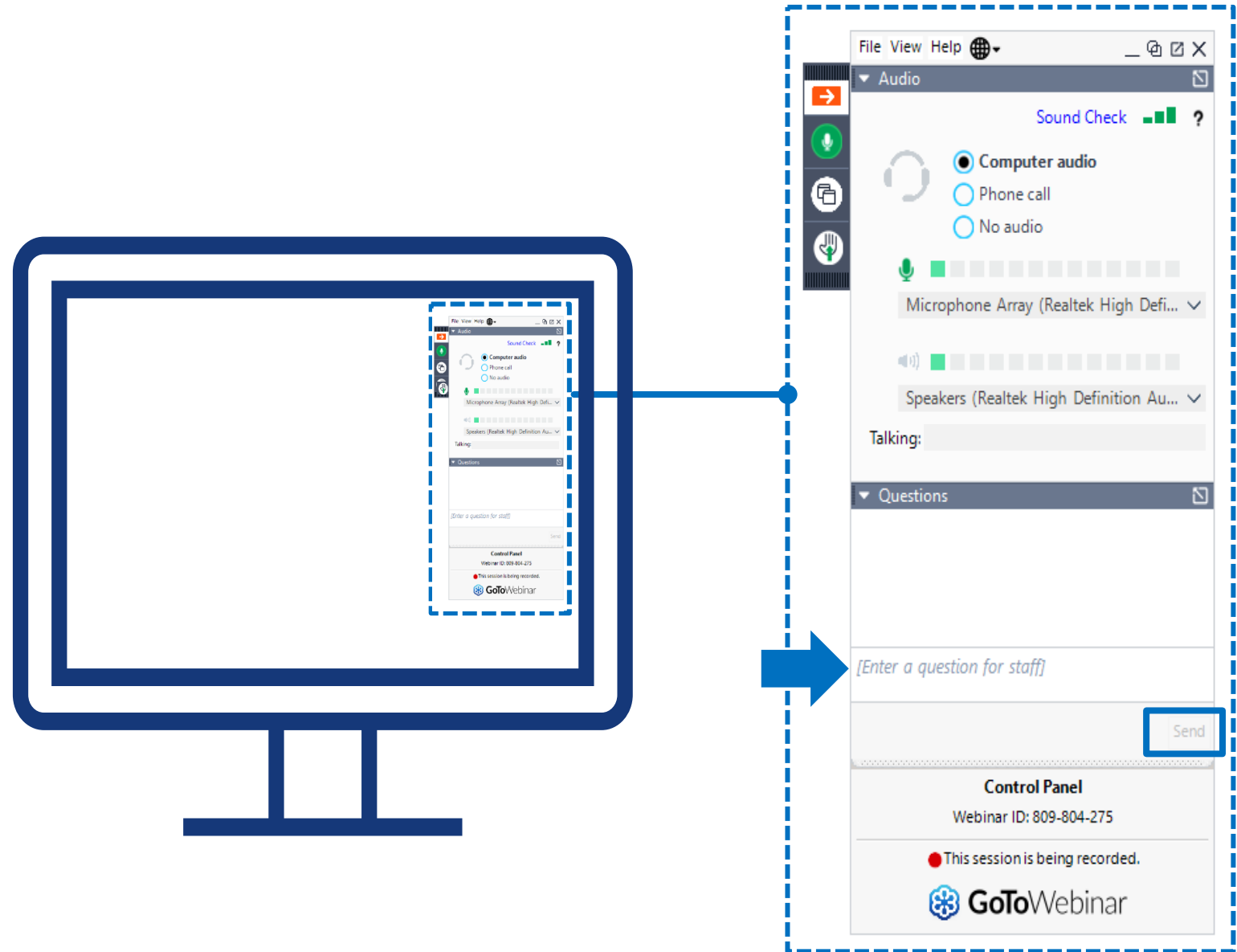
# Virtual Public Meeting Orientation



- This Virtual Public Meeting is being recorded.
- All attendees **will remain muted** throughout the meeting.
- If you experience technical difficulties, please contact **GoTo Webinar Support at +1(833) 851-8340**.
- At the end of the presentation attendees are also welcome to submit any questions/comments using the GoTo Webinar Question Panel and a member of the team will respond during the question-and-answer portion. To request to speak, click the Raise Hand button on the Control Panel and unmute your microphone when your name is called.

# Participating on GoTo Webinar

- If you would like to ask a question verbally, please click on the hand icon to be recognized.
- This meeting is being recorded and will be posted to [www.d4fdot.com](http://www.d4fdot.com).



# Meet the Team



**Mark Freeman**  
Construction Project Manager  
FDOT District Four  
Treasure Coast Operations



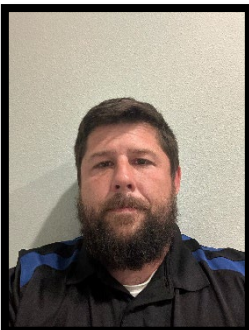
**Thuc Le, P.E.**  
Design Project Manager  
FDOT District Four



**Matt Bazin**  
Construction Project Administrator  
FDOT District Four  
Treasure Coast Operations

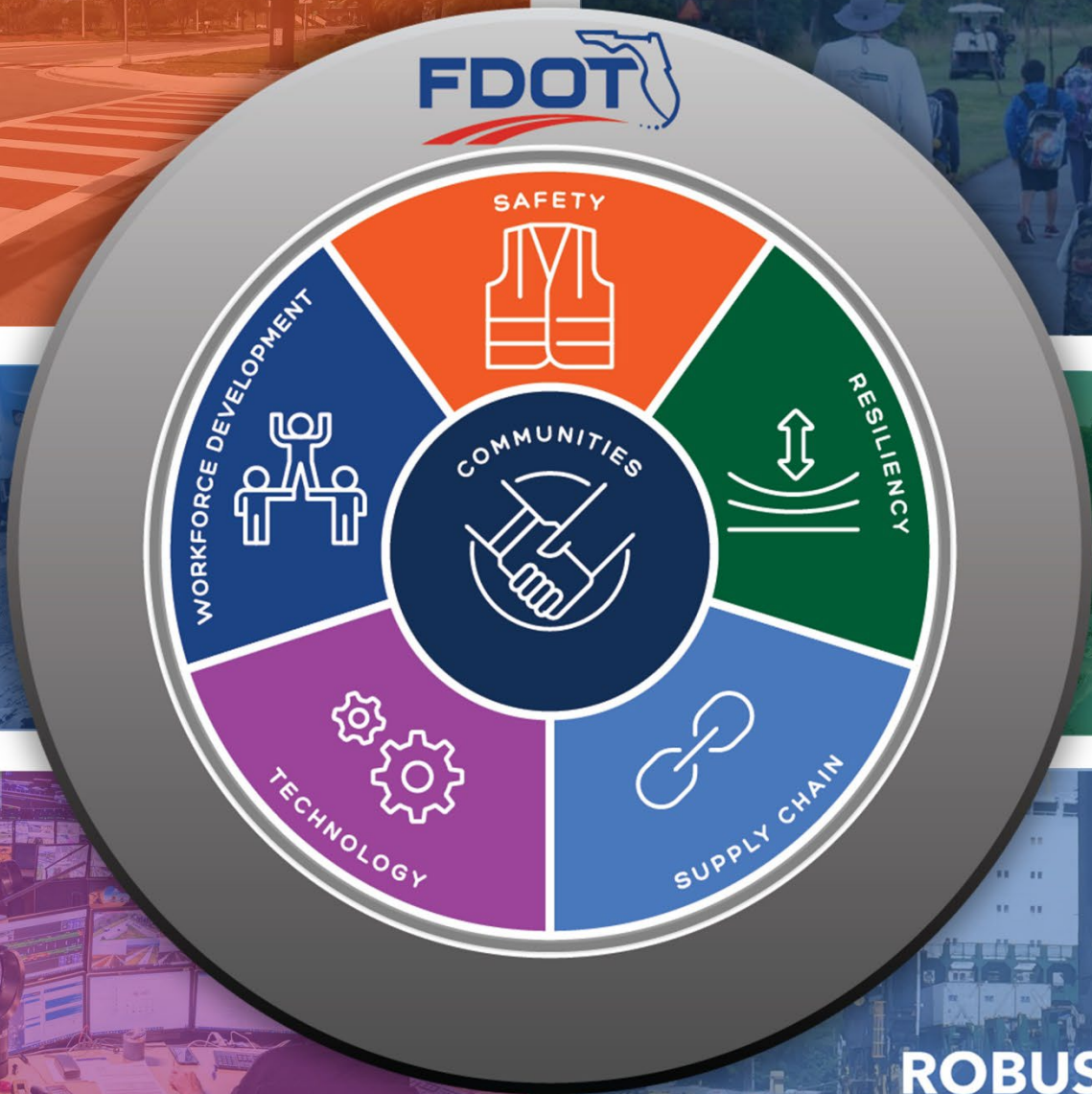


**Christopher Howard, P.E.**  
Engineer of Record  
Conzor Engineers, LLC



**William Wilson**  
Contractor  
Seacoast, Inc.





# **2055 Florida** Transportation Plan



**SINGLE, OVERARCHING PLAN**



**GUIDES FLORIDA'S TRANSPORTATION FUTURE**



**FOUNDATION FOR FLORIDA'S WORK PROGRAM**

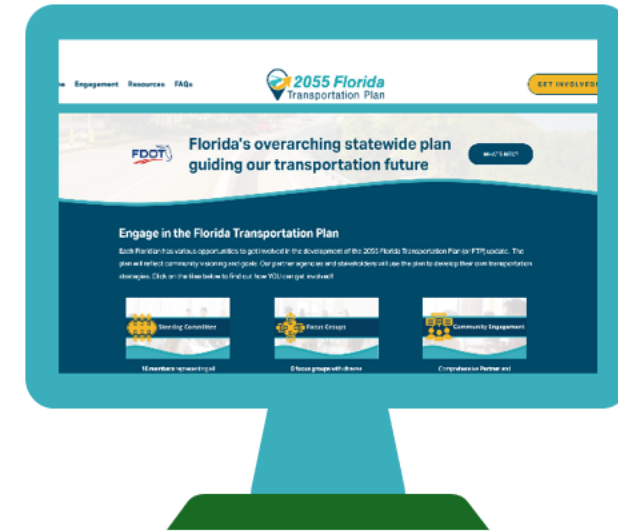


**UPDATED EVERY 5 YEARS**



**COLLABORATIVE EFFORT WITH PUBLIC AND PRIVATE PARTNERS**

Upcoming Regional Workshops, Focus Group Meetings, Virtual Statewide Webinars, and more!



**Scan to  
learn more!**

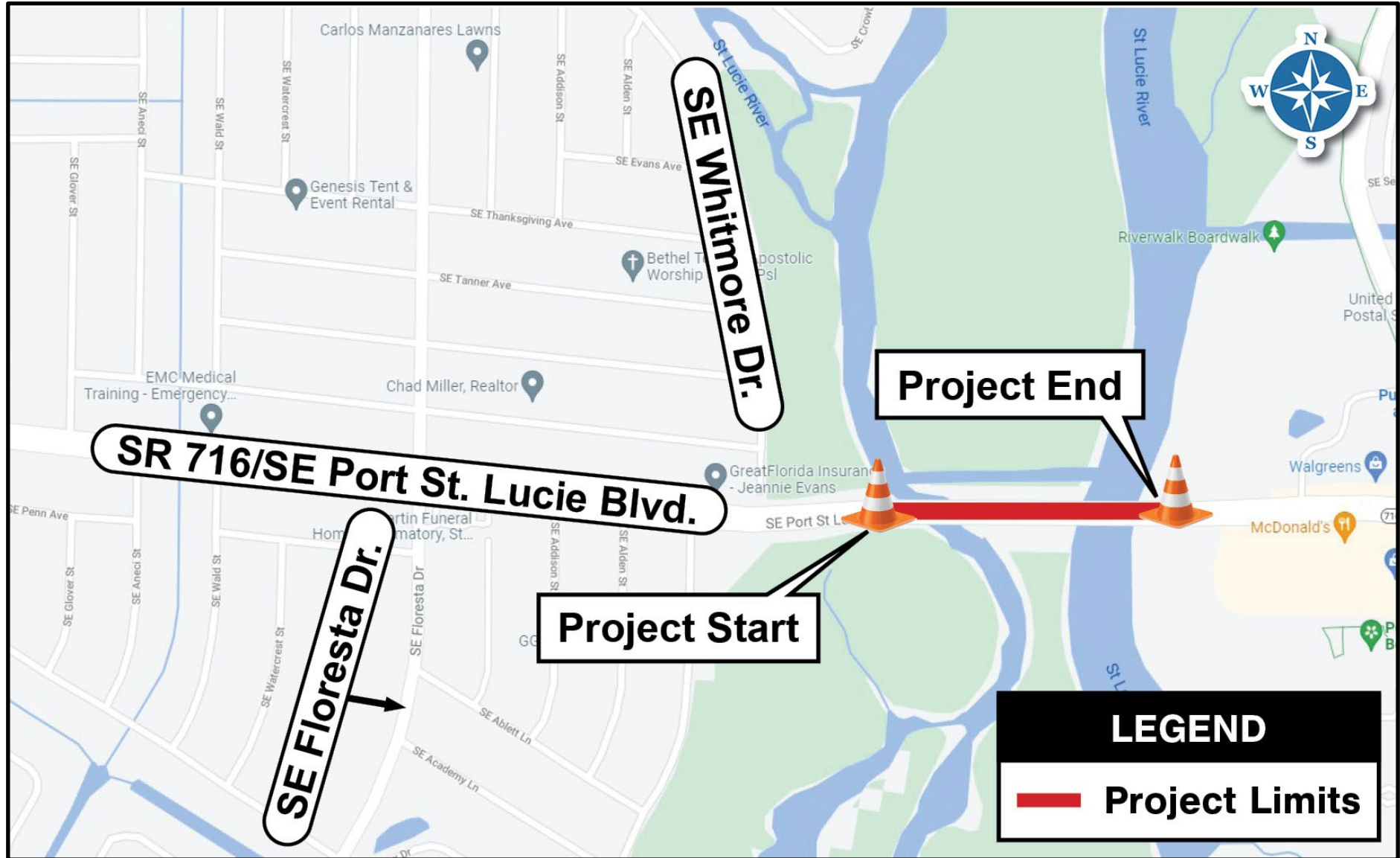


**Get Engaged Today!**

FloridaFTP.com



# Project Limits



# Project Overview

**Purpose:** To extend the life of the bridge structures by reconstructing the east and west seawalls and performing concrete repairs to improve resiliency and longevity.

**Length:** 0.3 miles

**Contractor:** Seacoast, Inc.

**Construction Start:** January 2025

**Cost:** \$2.6 Million

**Estimated Completion:** Late 2025



Eastern bridge section of SR 716/Southeast Port St. Lucie Boulevard looking north (pre-construction)

# Scope of Work

## Bridge Improvements

### Bridge Improvements

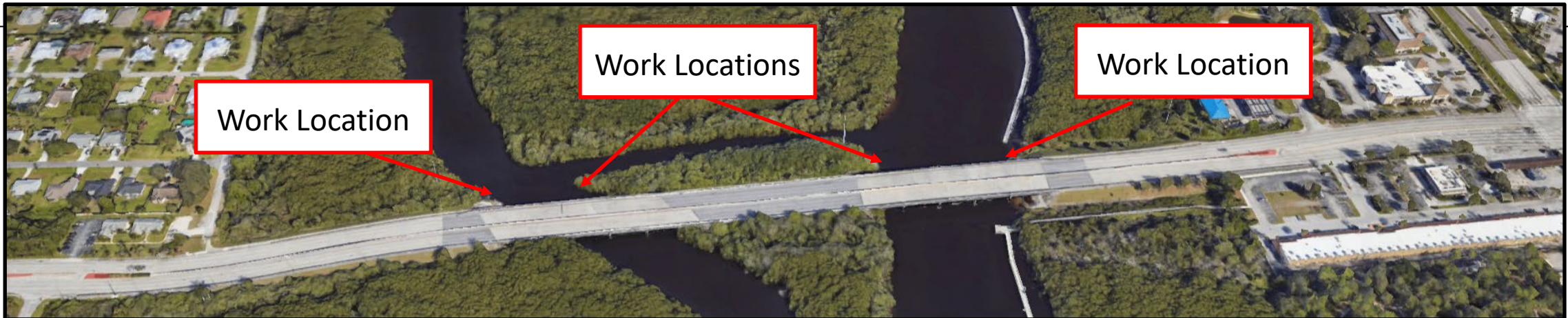
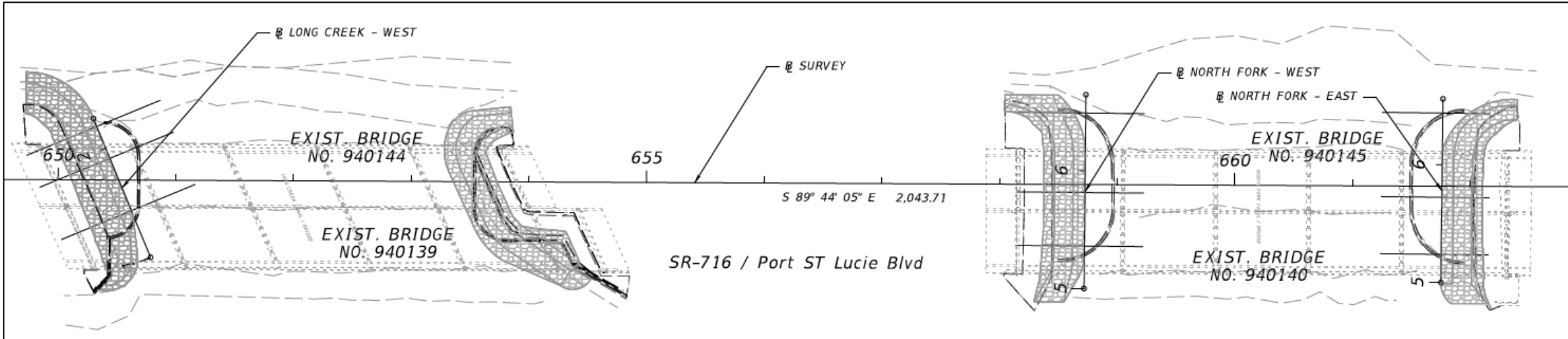
- Reconstructing the east and west seawalls to enhance resiliency and longevity of the structures
- Performing concrete repairs to the bridges at various locations to improve resiliency and longevity



Eastern section of the bridge looking north  
(pre-construction)



# Plan View - SR 716/Southeast Port St. Lucie Boulevard from west of the Long Creek River to east of the North Fork Bridge over the St. Lucie River



Aerial view of the project limits

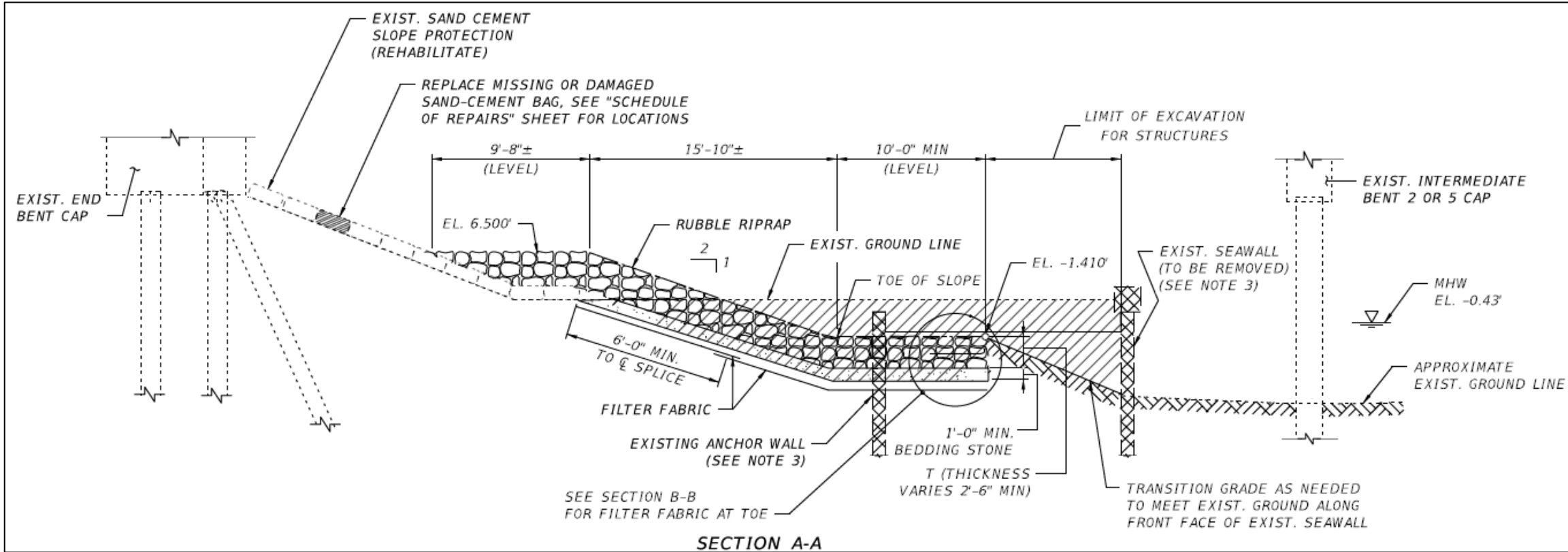
# Existing Seawall and Slope Protection



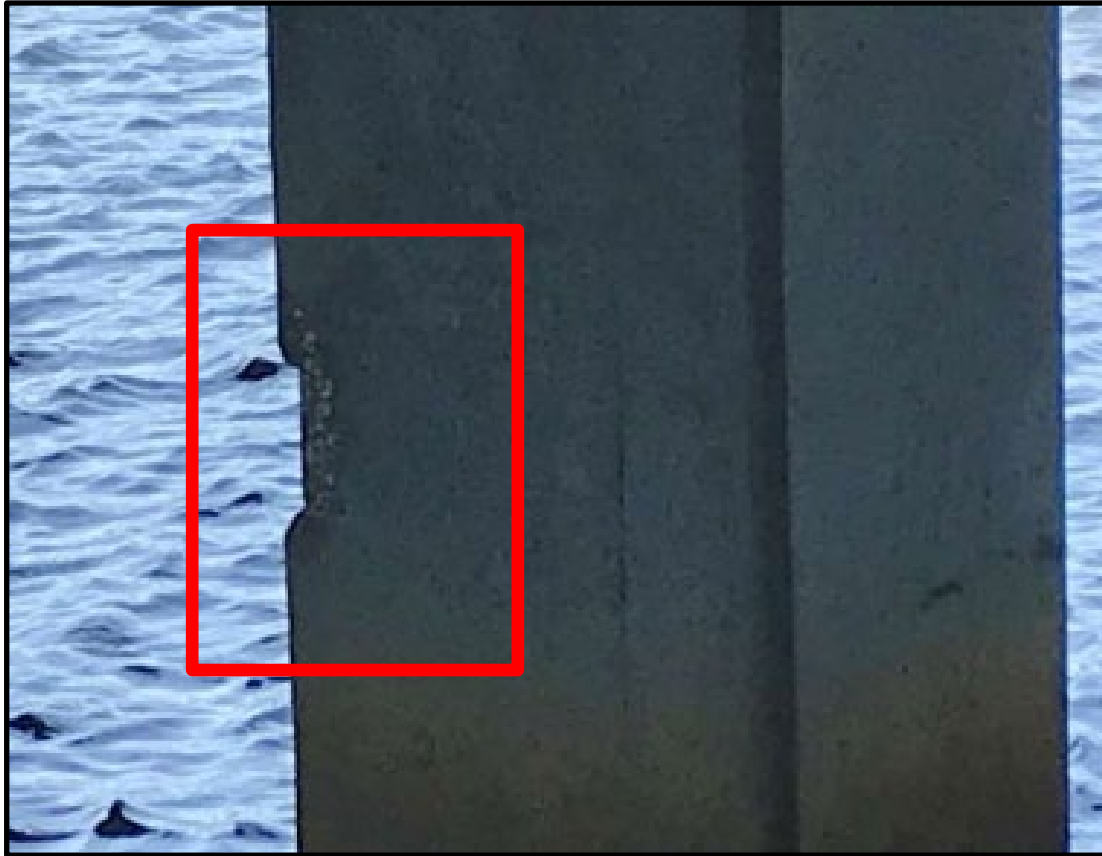
Existing view under the bridge  
(pre-construction)



# Plan View - Seawall Removal and Slope Protection



# Existing Concrete Spalls



Spalling concrete is a process where the surface of concrete breaks up and flakes off, usually without an external cause like fire or impact. It can appear as pitting, chipping, flaking, or peeling.

The areas outlined in red in the above images show the existing spalls on the concrete beams that will be repaired as part of the project improvements to enhance the resiliency and longevity of the bridge structures.

## Sand-Cement Repairs

- Rehabilitating the bridge slope by replacing damaged sandbags, adding sand-cement bags, and installing rubble riprap (broken stone and concrete) for enhanced protection



Existing sand-cement bags under the bridges  
(pre-construction)



## Mangrove Protections:

- Mangroves will be protected throughout construction
- Rubble riprap will be carefully hand-placed around mangroves located within the riprap slope protection



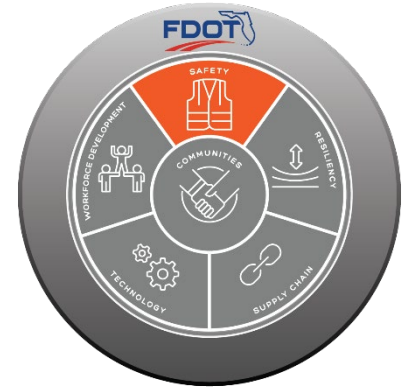
## Maintenance of Traffic:

- Business, pedestrian, and residential access will be maintained at all times throughout construction
- Work will be performed from barges within the waterway
- Single-lane closures in one direction on SR 716/Southeast Port St. Lucie Boulevard are permitted for up to three consecutive hours at one time
- The channel will remain open to marine traffic for the duration of construction



# Safety and Local Coordination

- **Public Safety is our Top Priority!**
  - **Work Zone Signage & Maintenance of Traffic**
    - Advanced warning and project signage will be placed throughout the construction corridor to alert the traveling public
  - **Local Agency & Stakeholder Coordination**
    - The project team will continue working closely with local stakeholders including local municipalities, schools, neighborhoods and other local agencies to ensure safety standards are met and impacts to the public are minimized in any way possible
  - **Emergency vehicles will be provided access at all times**



Lighted Message Board

# Community Outreach

- To receive project specific updates please email [skayser@corradino.com](mailto:skayser@corradino.com) to be added to the distribution list
- A weekly press release will be distributed every Friday
- Additional project specific information can be found on the website

**\*\*All project updates will be posted to the District Four website.\*\***

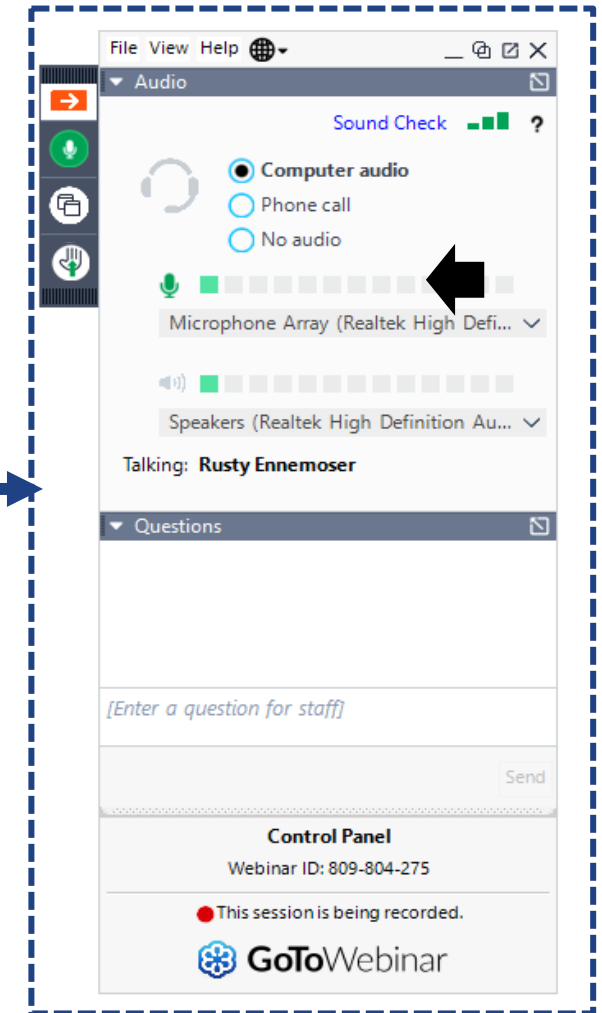


***Scan this QR code to go to the District Four Website.***

*[www.d4fdot.com](http://www.d4fdot.com)*

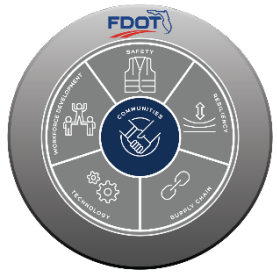
# Questions and Answers

- Attendees are welcome to submit questions/comments using the GoToWebinar Question Panel



# Contact Us

Throughout the project, questions or comments can be submitted via email or phone.



**Samantha Kayser**  
**Community Outreach Specialist**



[skayser@corradino.com](mailto:skayser@corradino.com)



(772) 579-5479

**Matt Bazin**  
**Construction Project Administrator**



[matthew.bazin@dot.state.fl.us](mailto:matthew.bazin@dot.state.fl.us)



(772) 429-4865

**Mark Freeman**  
**Construction Project Manager**



[mark.freeman@dot.state.fl.us](mailto:mark.freeman@dot.state.fl.us)



(772) 429-4904

***This PowerPoint presentation has been uploaded to GoTo Webinar for download.***

# FDOT Safety Message

**STATE TROOPER**

**MOVE OVER**

[flhsmv.gov/moveover](http://flhsmv.gov/moveover)

**FLHSMV**

The graphic illustrates the 'Move Over' law. On the left, a Florida State Trooper car is shown in a shield-shaped frame. Below it, the text 'MOVE OVER' is written in large white letters with yellow arrowheads pointing left and right. Underneath that is a road diagram with a dashed yellow center line. At the bottom left, the website 'flhsmv.gov/moveover' is displayed in yellow and white, followed by the 'FLHSMV' text and the 'Highway Patrol' logo. On the right side of the graphic, a top-down view of a road shows several blue cars. A yellow line indicates a car moving from the left lane into the right lane. Yellow arrowheads point from the right lane towards the left lane, indicating the required maneuver.





**Thank you for attending today's  
Virtual Public Meeting!**